

Quick start guide

CLIP PROJECT marking Part 3: Data import

Quick start guide

CLIP PROJECT marking

Part 3: Data import

2013-02-18

Designation: UM EN CLIP PROJECT MARKING 03

Revision: 00

Order No.: 2992116

This user manual is valid for:

| | |
|----------------------|---------------|
| Designation | As of version |
| CLIP PROJECT marking | 8.2 |



Other quick start guides for CLIP PROJECT can be downloaded at www.phoenixcontact.net/products

Table of contents

| | | |
|------|---|----|
| 1 | Data import with CLIP PROJECT marking | 4 |
| 2 | Importing data from a file | 5 |
| 2.1 | Opening the manager for data interchange | 5 |
| 2.2 | Selecting an import file | 5 |
| 2.3 | Suppressing headers and empty lines..... | 6 |
| 2.4 | Setting delimiters for text files..... | 6 |
| 2.5 | Filtering and sorting data | 7 |
| 2.6 | Accepting the system-location structure from CAE project..... | 8 |
| 2.7 | Issuing data on a new material or in a new section | 8 |
| 2.8 | Assigning material | 10 |
| 2.9 | Arranging data on the material..... | 11 |
| 2.10 | Saving and running an import configuration..... | 13 |
| 3 | Importing data from CLIP PROJECT planning | 14 |
| 3.1 | Exporting data from CLIP PROJECT planning..... | 14 |
| 3.2 | Editing a data import from CLIP PROJECT planning | 14 |
| 4 | Re-using and editing an import configuration | 15 |
| 4.1 | Re-using import configurations | 15 |
| 4.2 | Editing an import configuration | 16 |

1 Data import with CLIP PROJECT marking

You can label the marking material with existing marking data from CAE systems, tables or word processing programs. By using the Data interchange function, you can import data that comes, for example, in Microsoft Excel format or as a text file into CLIP PROJECT marking.

The import of data can be set up individually. Comprehensive data can then be assigned to the marking materials in this way. Once the configuration for the data interchange has been created, it can be re-used and used in other marking projects.

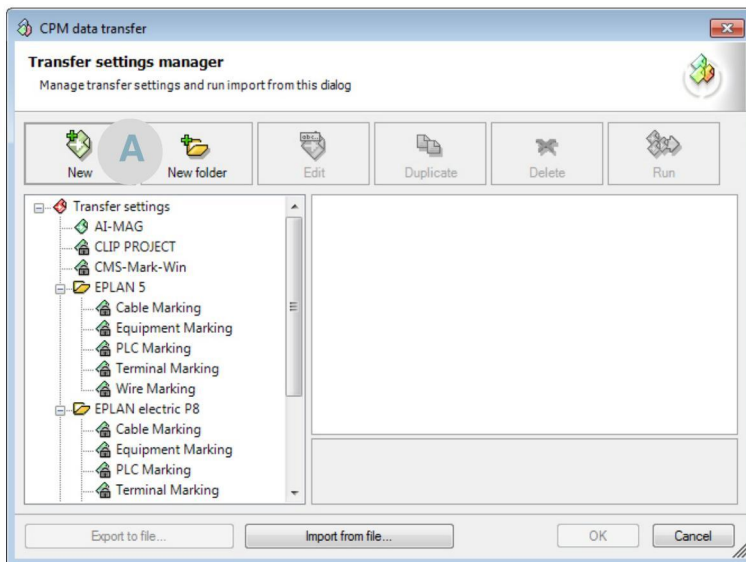


Make sure you always use the latest documentation.

It can be downloaded at www.phoenixcontact.net/products

2 Importing data from a file

2.1 Opening the manager for data interchange

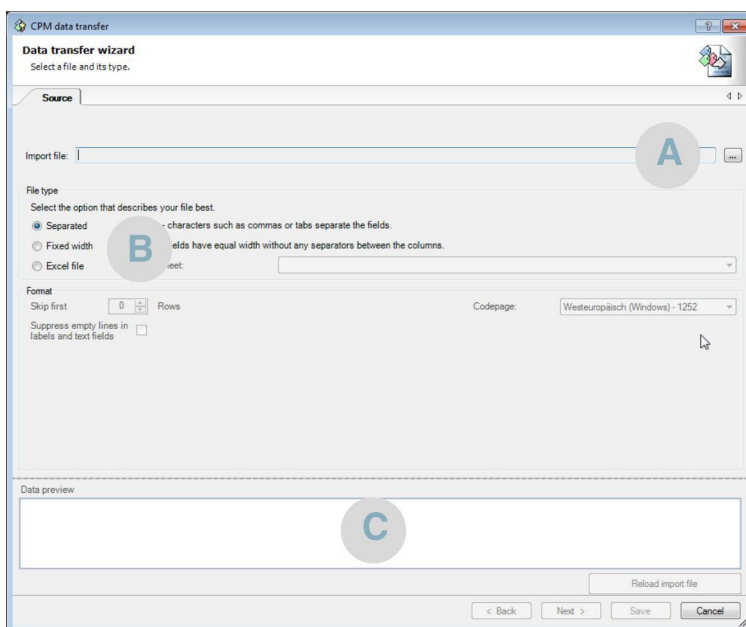


Select “Data interchange, Transfer settings manager” from the menu or click on this symbol in the toolbar.

The Transfer settings manager then opens.

A Click on “New” to make the import settings for the data interchange.

2.2 Selecting an import file



Here you can set which file is to be accepted.

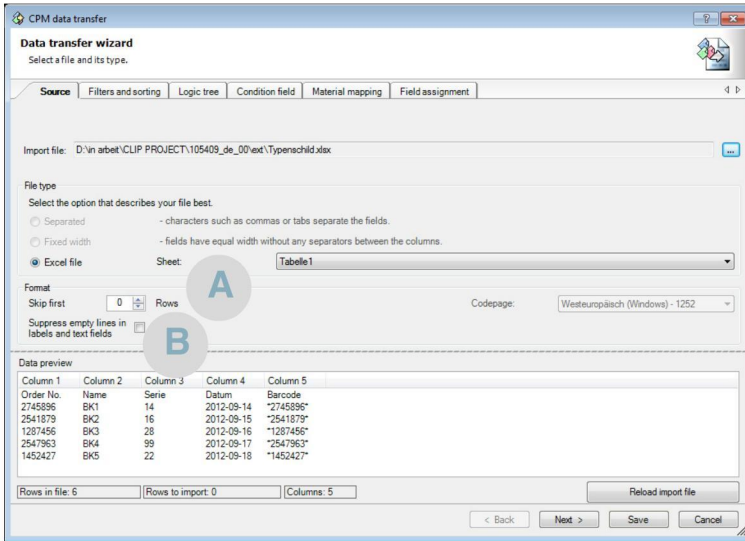
A Select a file.

B Select a file type.
A Microsoft Excel file is automatically detected. You can set which worksheet you want to import.
For text files you can choose between “Separated” and “Fixed width”.
On the “Delimiters” tab you can set how the text file is to be read (see Section 2.4 on page 6).

C You will then receive a data preview.

CLIP PROJECT marking
Importing data from a file

2.3 Suppressing headers and empty lines



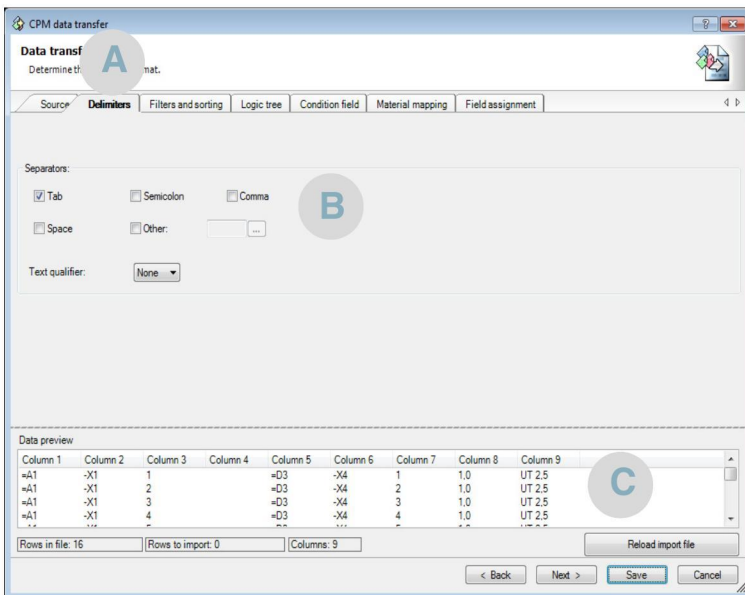
You have the option here to suppress any headers and empty lines during data import.

A If the import file contains table headings, these should not typically be taken into account. The number of headers to be suppressed can be set in the “Source” tab under “Skip first x”.

B If a record for a label contains an empty cell, an empty line is inserted on the label. You can prevent empty lines from appearing on the label by checking the “Suppress empty lines in labels and text fields” box. For lines in which a value is missing, the remaining data is aligned centrally on the label.



2.4 Setting delimiters for text files



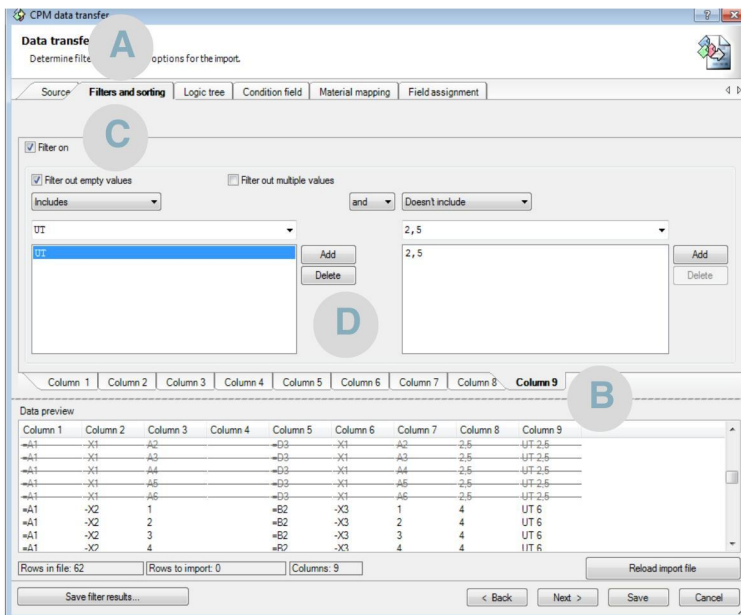
The “Delimiters” tab only appears if “Separated” or “Fixed width” file types are set in the “Source” tab.

A Go to the “Delimiters” tab. The example shows the “Separated” file type.

B Set the delimiters.

C Check in the data preview whether the import meets your requirements.

2.5 Filtering and sorting data



You can filter and sort the data that you want to import by columns.

A Go to the “Filters and sorting” tab.

Filtering data

B Select a column.

The filter refers to this column. You can set filters in succession for several columns.

C Check “Filter on”.

D Set conditions

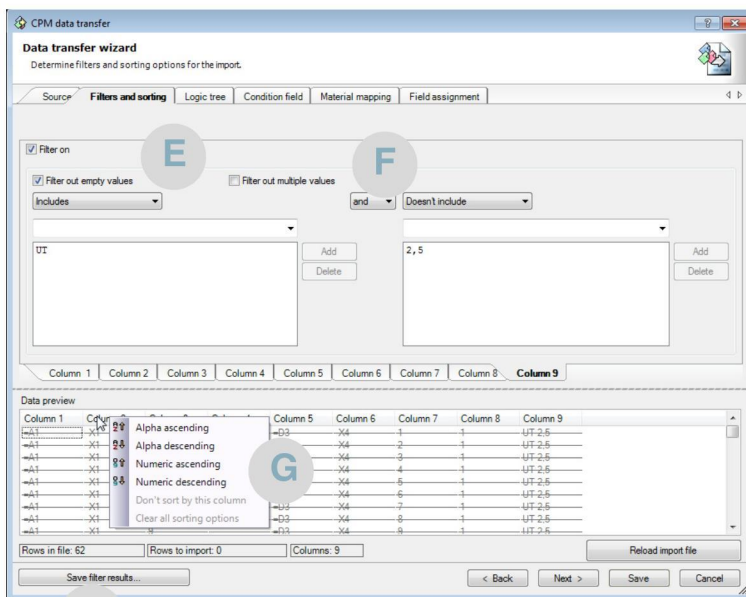
Example: all UT terminal blocks are issued, but without UT 2,5.

Select one of the conditions (here: “Includes”).

You can select existing column text or enter free text (here: “UT”).

Click on “Add”.

This condition can be linked to another condition using AND/OR (here: “and doesn't include 2,5”).



E Filter out empty values

If you check a box here, lines in which there is an empty value in this column are not issued.

F Filter out multiple values

If you check a box here, only the first occurrence of a value in this column is taken into account. Lines in which the value appears more than once are suppressed.

Sorting data

G Left-click one of the columns in the data preview and select the sorting.

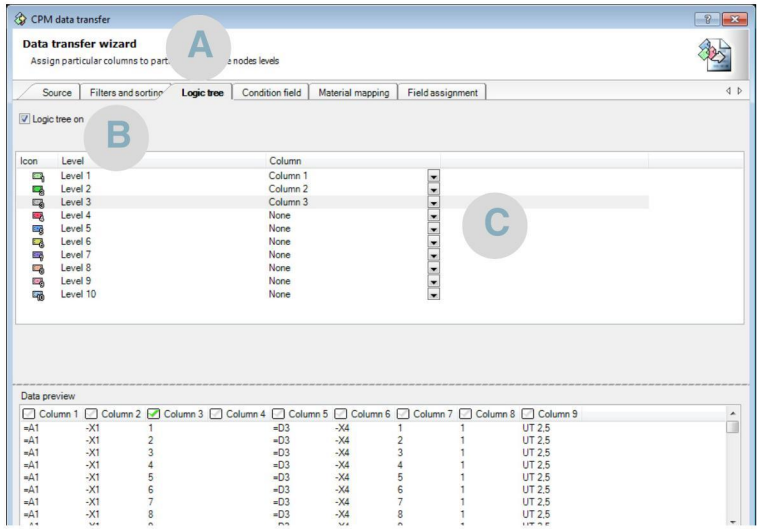
The values are then subsequently assigned to the labels in this order.

Saving filter results

H If required, click on the “Save filter results” button to save the filtered data as a file.

CLIP PROJECT marking
Importing data from a file

2.6 Accepting the system-location structure from CAE project

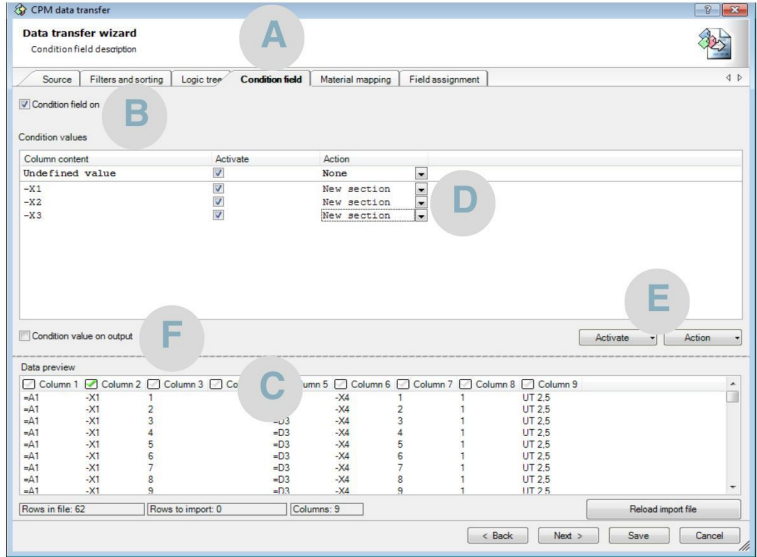


If you have comprehensive marking data from a CAE project with a system-location structure, then this structure can be accepted in CLIP PROJECT marking.

By accepting the project structure, this makes it possible to accept labels for defined points of the structure in a targeted manner.

- A** Go to the “Logic tree” tab.
- B** Check the “Logic tree on” box to be able to work with the hierarchical levels.
- C** Assign columns to the hierarchical levels.

2.7 Issuing data on a new material or in a new section

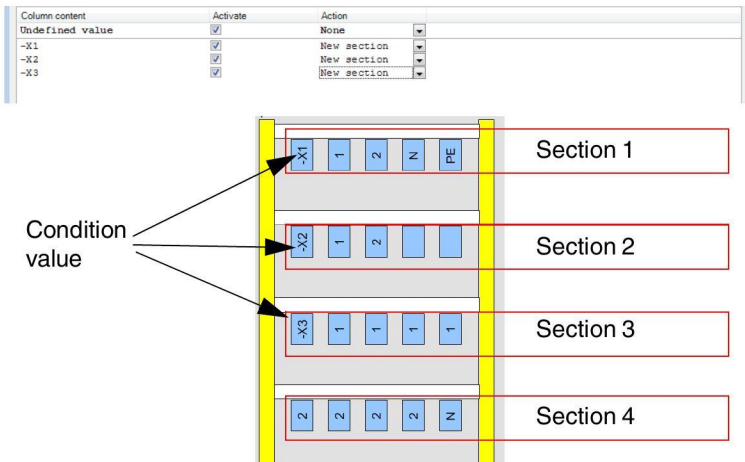


You can specify that a new material is to be selected for specific values. As an example, the data for a new row of terminal blocks can always be printed on a new mat. The same applies to sections (see “Example of sections” on page 9).

- A** Go to the “Condition field” tab.
- B** Check “Condition field on”.
- C** Select one or more columns that contain the condition.
- D** Assign an action to the conditions (“New material” or “New section”).
- E** You can activate/deactivate all conditions at the same time via the “Activate” button. You can assign an action to all conditions via the “Action” button.
- F** If you check “Condition value on output”, the condition value is issued as well. It then appears at the start of the new material or new section.



2.7 Issuing data on a new material or in a new section



Example of sections

For default materials, a new section always begins with a new material. By using the template designer, you also have the option to define separate sections. The template designer is a function of CLIP PROJECT professional.

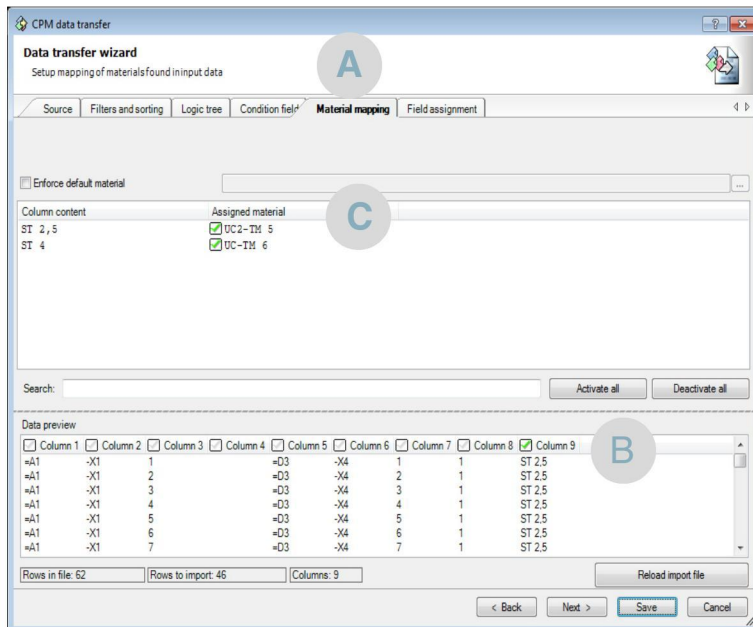
If, for example, you always want to begin the marking of new rows of terminal blocks in a new material line, then you have to create a separate material description using the template designer and define each material line here as a new section.

The creation of templates is described in detail in Part 2 of this series (UM EN CLIP PROJECT MARKING 02).

A new section is started whenever there is a defined value in column 2 (-X1, -X2 or -X3). In this case it is a new line.

The condition value (-X1, -X2 or -X3) is printed at the start of the line if the corresponding box is checked (see F on page 8).

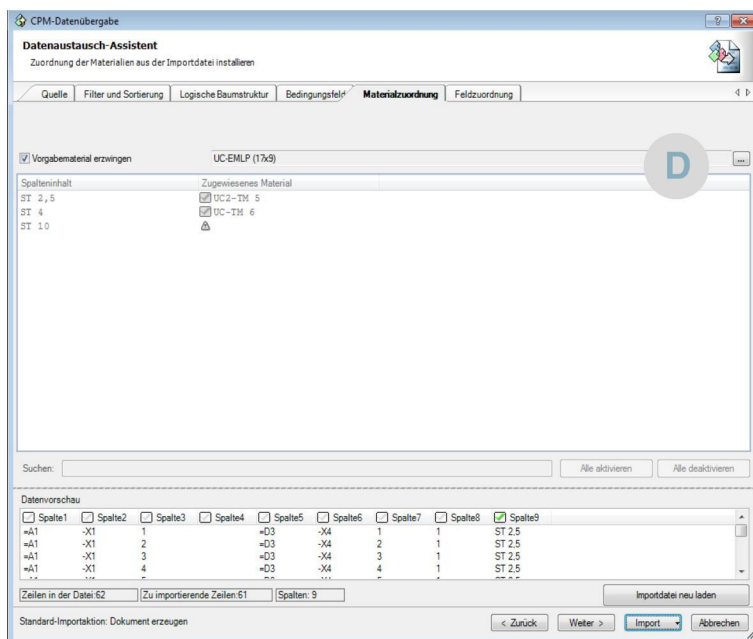
2.8 Assigning material



Decide on which material the data should be issued.

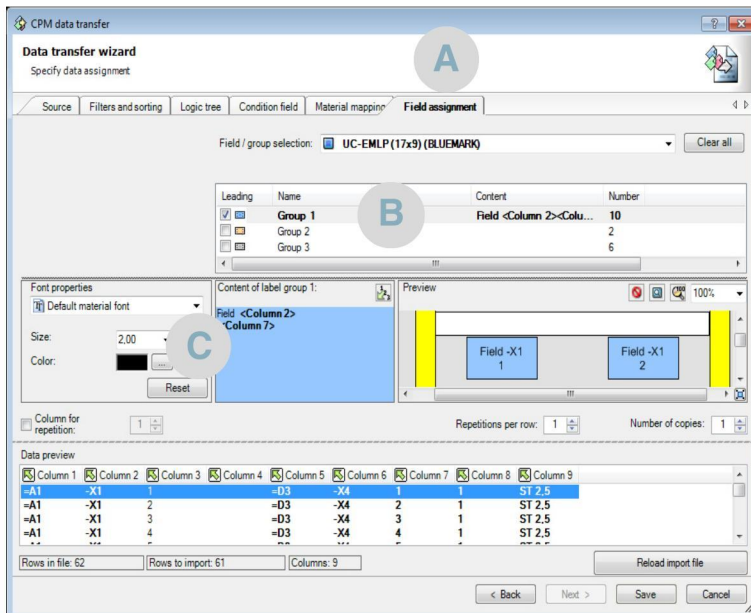
It is possible to issue individual data on different materials. As an example, you can specify that all ST 2,5 are issued on UC-TM 5 and all ST 4 are issued on UC-TM 6.

- A** Select the “Material mapping” tab.
- B** If you want to issue the data on different materials, select the column which contains the values for the material assignment.
- C** Assign the desired material to the different values in the column.
 You can find values in a targeted manner via the “Search” field.
 You can jointly activate/deactivate all assignments via the “Activate all” and “Deactivate all” buttons.



D If you want to assign all data to a material, activate the “Enforce default material” field and then select the material.

2.9 Arranging data on the material



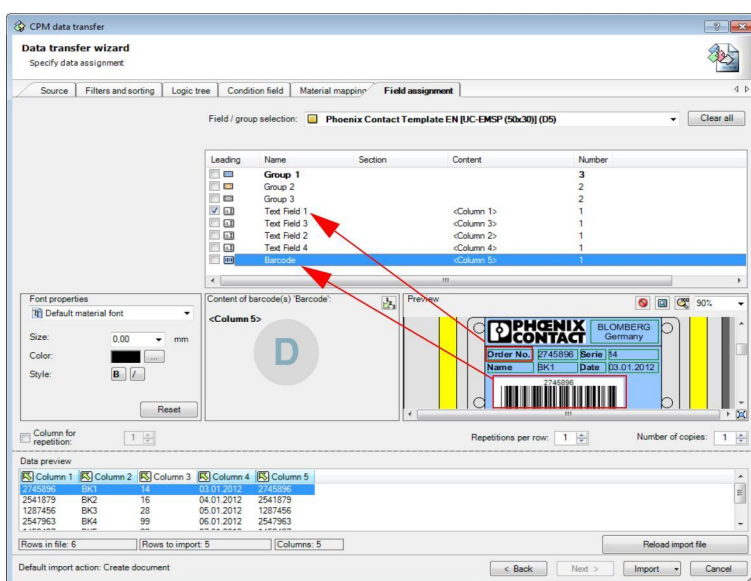
Decide how the data should be issued on the material.


The labels of a material description are divided into groups.

In the example you can see the material description for UC-EMLP. The blue group 1 contains the labels that are used for marking purposes. Groups are also assigned to the frame so that it can be marked as well. The horizontal frame parts are defined as a white group and the vertical frame parts as a yellow group.


A Select the “Field assignment” tab.

B Select which part of the material is to be marked. As an example, group 1 contains the identification labels.



C Drag the desired column  using the mouse pointer into the “Content of...” window (drag & drop).

You can drag in the content of several columns, insert a line break or add text.

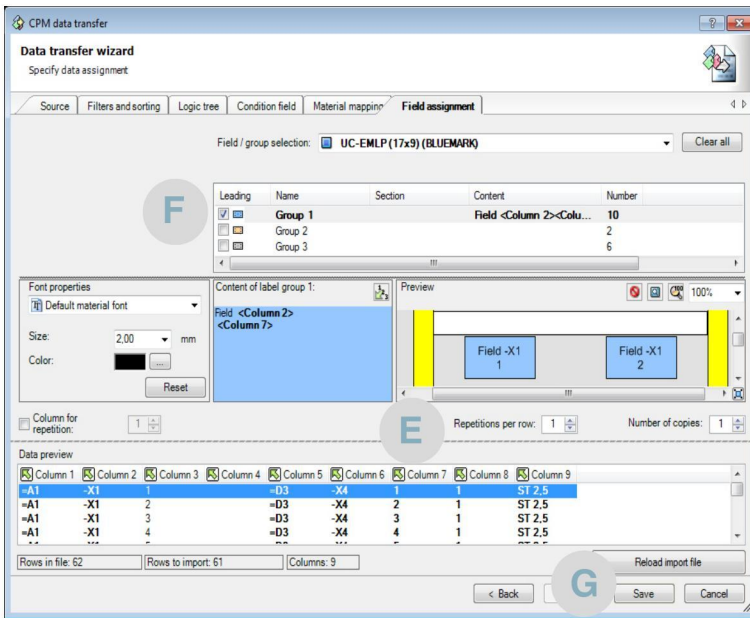
You can also edit the font properties or insert a counter .

The effect on the material is displayed in the preview. (You may need to zoom into the central section of the window using the mouse).

D With CLIP PROJECT marking professional you can create separate material descriptions along with fields here for data import purposes, such as text boxes or barcodes.

The creation of templates is described in detail in Part 2 of this series (UM EN CLIP PROJECT MARKING 02). Fields to which you want to assign marking information must be identified in the template with a name and should not be write-protected.

2.9 Arranging data on the material [...]



E If you want to repeat a label, simply enter the number of copies under “Repetitions per row”. If “2” is selected then each label is shown twice (i.e., label 1, label 1, label 2, label 2).

You can also print the overall effect several times if you increase the value in “Number of copies”.

If you want to repeat the labels several times in a different manner check the “Column for repetition” box. You must then specify the column that contains the number per label.

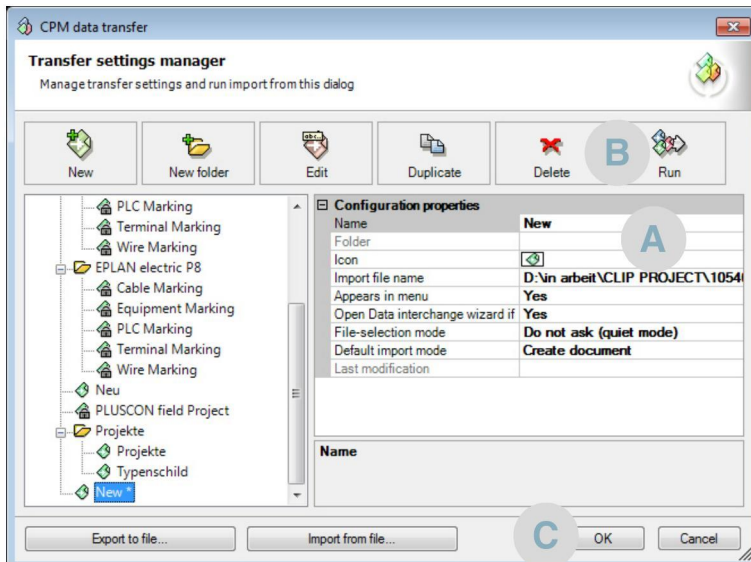
F Check which group is the leading group. The box in the “Leading” column must be checked for this purpose. The blue group 1 is typically the leading group as it contains the labels.

The leading group specifies the change to a new material. If the fields of this group are filled on a material, printing is then continued on a new material.

If the yellow group 2 is the leading group, then a new material is started after only two lines as both side parts are then marked.

G Click on “Save” to save the import configuration.

2.10 Saving and running an import configuration



You must save the settings in order to be able to run them.

Click on “Save” in the Transfer settings manager. A new window appears.

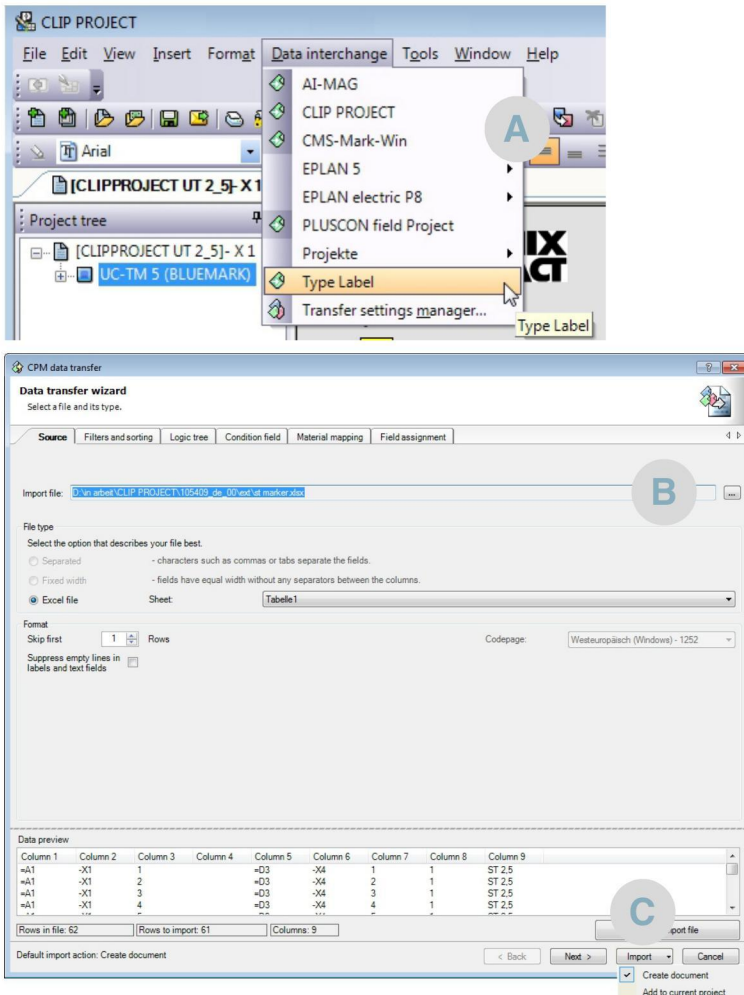
A Enter a name under “Configuration properties, Name”.

B Click on “Run” to run the data import for the first time.
(The way in which the import configuration can be used again is described in Section 4.)

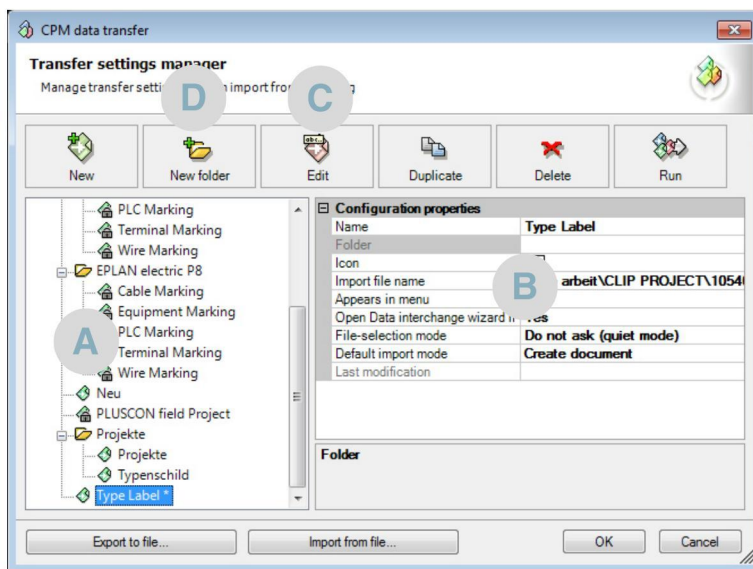
C Click on the “OK” button to close the window.
The result of the import is displayed.

4 Re-using and editing an import configuration

4.1 Re-using import configurations



4.2 Editing an import configuration



Select "Data interchange, Transfer settings manager" from the menu or click on this symbol in the toolbar.

The Transfer settings manager then opens.

A Select one of the saved settings.

B If required, you can change the properties under "Configuration properties".

C Click on the "Edit" button to change the settings.

You can also delete or duplicate the settings via the other buttons.

D In addition you can create a new folder via the "New folder" button in order to structure the different import configurations.

The folder is only saved if it is not empty. Move at least one of the configuration settings into the new folder via CTRL+arrow key.